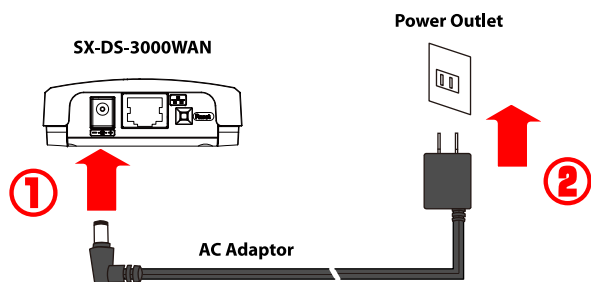


SX-DS-3000WAN allows you to configure its wireless settings easily using a push switch if your wireless router supports WPS (Wi-Fi Protected Setup). This sheet explains how to configure wireless settings using the push switch.

! NOTE

- To perform the wireless configuration using WPS, your wireless router must support WPS. Please make sure that a wireless router supporting WPS is set up in your environment.
- While performing this configuration, please temporarily move SX-DS-3000WAN closer to your wireless router to make it easier for both devices to communicate.
- Depending on your wireless router, WPS may need to be enabled manually. For details, refer to the operation manual that came with your wireless router.
- If a security feature such as MAC Address filtering is enabled on your wireless router, disable it temporarily so that SX-DS-3000WAN can communicate with your wireless router.

- 1** Connect the AC adaptor to SX-DS-3000WAN and the AC plug to the power outlet.



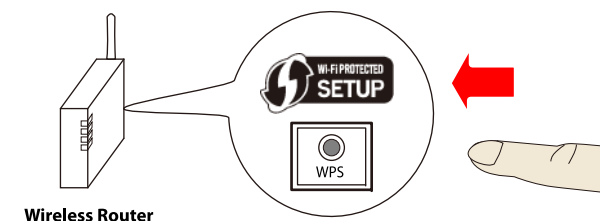
- It is not necessary to connect a network cable to SX-DS-3000WAN.

- 2** Confirm that the Wireless LED(WLAN) on SX-DS-3000WAN blinks in Orange or turns to Green.



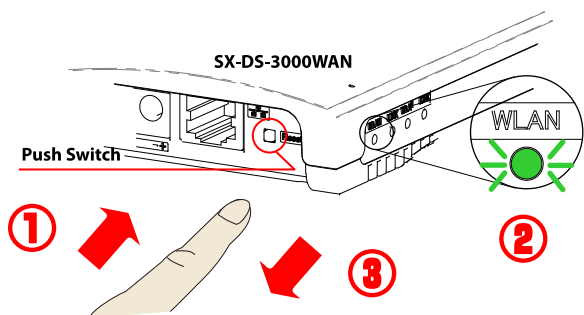
- If the Wireless LED does not blink in Orange or turn to Green, reset SX-DS-3000WAN to factory defaults and start from step 1 again. For how to reset SX-DS-3000WAN to its factory defaults, refer to the Users Manual or Setup Guide.

- 3** Press the WPS button on your wireless router. Confirm that your wireless router is ready for a wireless connection to be made.



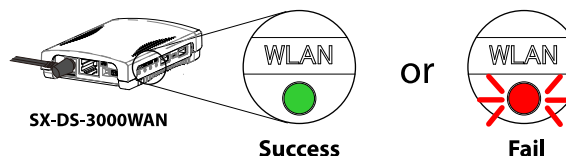
- The name, position and shape of the WPS button will differ depending on your wireless router. For details, refer to the operation manual that came with your wireless router.
- Please use only one wireless router. If two or more routers are waiting for wireless connections, SX-DS-3000WAN will not be able to connect properly.

- 4** Press and hold the push switch on SX-DS-3000WAN. When the Wireless LED blinks in Green, release the push switch.



- Within 3-10 sec after pressing and holding down the push switch, the Wireless LED will blink in Green.

- 5** SX-DS-3000WAN will start to communicate with your wireless router. The Wireless LED's lighting pattern will show you if the wireless configuration succeeded or failed.



- It may take a while to complete the wireless configuration depending on your environment (up to 2 min).

When successful, the Wireless LED will turn to Green.

In this case, wireless configuration is complete.

- Power off SX-DS-3000WAN, move it to where you wish to use it and then power it on again.
- Connect the USB device(s) that you wish to use over the network to SX-DS-3000WAN.
- To install the software applications onto your computer, click **Computer Configuration** from the menu screen. For details, refer to the Users Manual.

- It is not necessary to install the applications if you plan to use printers with the standard Windows printing feature.

When wireless configuration has failed, the Wireless LED will blink in Red.

Read the instructions on this sheet and start from step 3 again.